

# See at a glance what works best for your business


**Good for:**

Hospitality, retail, education, medical practices and small businesses on a budget.

Aged care, medical practices, hospitality, retail, mining and workplaces with chemicals, dust or dirt.

Production, manufacturing and workplaces with chemicals, dust or dirt.

Mining, manufacturing, educational and workplaces with chemicals, dust or dirt.

Manufacturing and workplaces with chemicals, dust or dirt.

Workplaces with a large number of salaried staff, and most other workplaces.

Mobile workforce, pharmacies and aged care, construction and light industry, NDIS and home care providers, transport and delivery drivers.

**How it works:**

Plugs into USB port to scan staff fingerprints when they clock on and off.

Records and stores staff's unique facial characteristics. It then checks for a match and automatically clocks them on and off.

Staff select their name and register their iris reference. They then scan their iris when clocking in and out for shifts and breaks.

With contactless key fobs, staff can easily scan in and out for shifts and breaks.

Dual sensor cameras scan each employee's face and log staff clock in and out times.

Staff simply enter a pin code or password on a PC or tablet to clock on and off.

With GPS location, staff simply clock on and off with their phone. It pinpoints and compares and records their location against digital clocking records.

**Top features:**

- ✓ Job selection makes it easy to attribute correct job costings
- ✓ Gives reliable results with biometric clocking
- ✓ Easy and inexpensive to get up and running
- ✓ Offers password and pin code clocking, so staff don't have to give their biometric information

- ✓ Job selection makes it easy to attribute correct job costings
- ✓ Touchless clocking keeps device cleaner and safer to use
- ✓ Gives reliable results with biometric clocking
- ✓ Offers password and pin code clocking, so staff don't have to give their biometric information
- ✓ Stay compliant with COVID-19 and WHS regulations

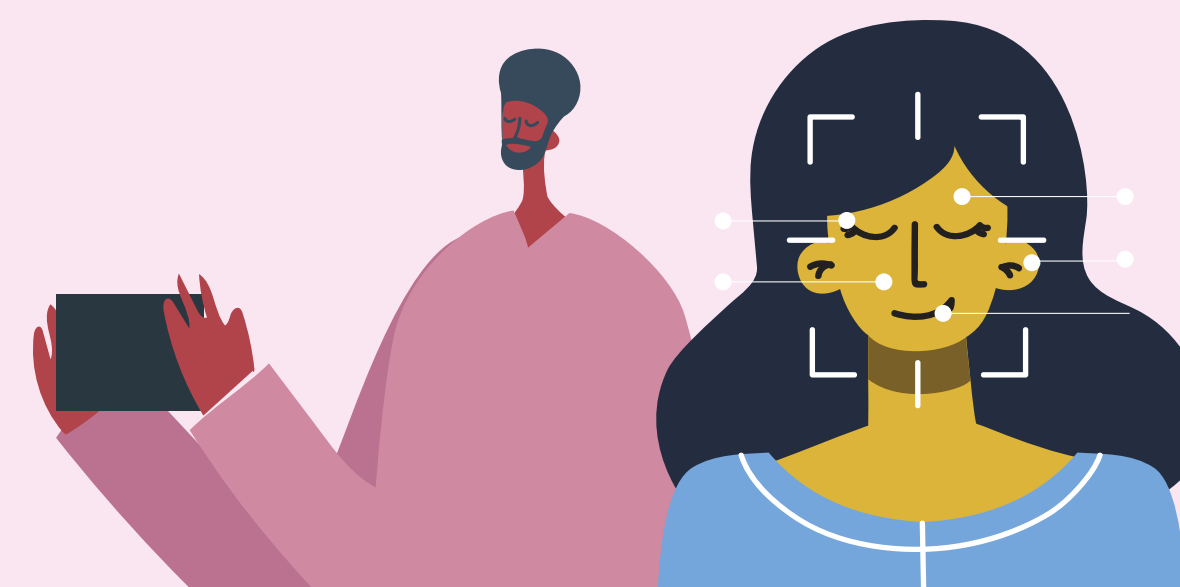
- ✓ Job selection makes it easy to attribute correct job costings
- ✓ Touchless clocking keeps device cleaner and safer to use
- ✓ Gives reliable results with biometric clocking
- ✓ Offers password and pin code clocking, so staff don't have to give their biometric information
- ✓ Simple, secure and accurate way to check staff are in the right place at the right time

- ✓ Job selection makes it easy to attribute correct job costings
- ✓ Touchless clocking keeps device cleaner and safer to use
- ✓ May integrate with your existing RFID tags

- ✓ Stay compliant with COVID-19 and WHS regulations
- ✓ Touchless clocking keeps device cleaner and safer to use
- ✓ More secure: captures a real 3D facial image and scans for a match, so staff can't clock others on and off or use a photo

- ✓ Job selection makes it easy to attribute correct job costings
- ✓ Securely stores staff details
- ✓ Staff and managers can easily access and manage details
- ✓ Easy and inexpensive to get up and running

- ✓ Job selection makes it easy to attribute correct job costings
- ✓ Stay compliant with COVID-19 and WHS regulations
- ✓ Save time and money on swipe cards and equipment
- ✓ Easy and inexpensive to get up and running
- ✓ Simple, secure and accurate way to check staff are in the right place at the right time
- ✓ Keep an audit trail of where workers were and when
- ✓ Set up notifications to show when staff clock away from a specific location


**Includes:**

- ✓ Job selection
- ✓ Biometric clocking
- ✗ Touchless clocking
- ✗ Multi-camera biometric
- ✗ GPS location

- ✓ Job selection
- ✓ Biometric clocking
- ✓ Touchless clocking
- ✗ Multi-camera biometric
- ✗ GPS location

- ✓ Job selection
- ✓ Biometric clocking
- ✓ Touchless clocking
- ✗ Multi-camera biometric
- ✗ GPS location

- ✓ Job selection
- ✓ Biometric clocking
- ✓ Touchless clocking
- ✗ Multi-camera biometric
- ✗ GPS location

- ✗ Job selection
- ✓ Biometric clocking
- ✓ Touchless clocking
- ✓ Multi-camera biometric
- ✗ GPS location

- ✓ Job selection
- ✗ Biometric clocking
- ✗ Touchless clocking
- ✗ Multi-camera biometric
- ✗ GPS location

- ✓ Job selection
- ✓ Biometric clocking
- ✓ Touchless clocking
- ✗ Multi-camera biometric
- ✓ GPS location

**Available on:**

- ✓ Windows\*
- ✗ Android<sup>†</sup>
- ✗ iOS
- ✗ Browser

- ✗ Windows\*
- ✓ Android<sup>†</sup>
- ✓ iOS
- ✗ Browser

- ✓ Windows\*
- ✗ Android<sup>†</sup>
- ✗ iOS
- ✗ Browser

- ✓ Windows\*
- ✗ Android<sup>†</sup>
- ✗ iOS
- ✗ Browser

- ✓ Windows\*
- ✗ Android<sup>†</sup>
- ✗ iOS
- ✗ Browser

- ✓ Windows\*
- ✓ Android<sup>†</sup>
- ✓ iOS
- ✓ Browser

- ✗ Windows\*
- ✓ Android<sup>†</sup>
- ✓ iOS
- ✗ Browser

\* Windows version X86 is supported, ARM is not  
<sup>†</sup> Android Samsung Galaxy Tab S6 Lite is fully supported



Have a question?  
 Speak to a member of our team today.